

CoroMill® MS60

True versatility in
shoulder and face
milling operations



SANDVIK
coromant



Experience true versatility

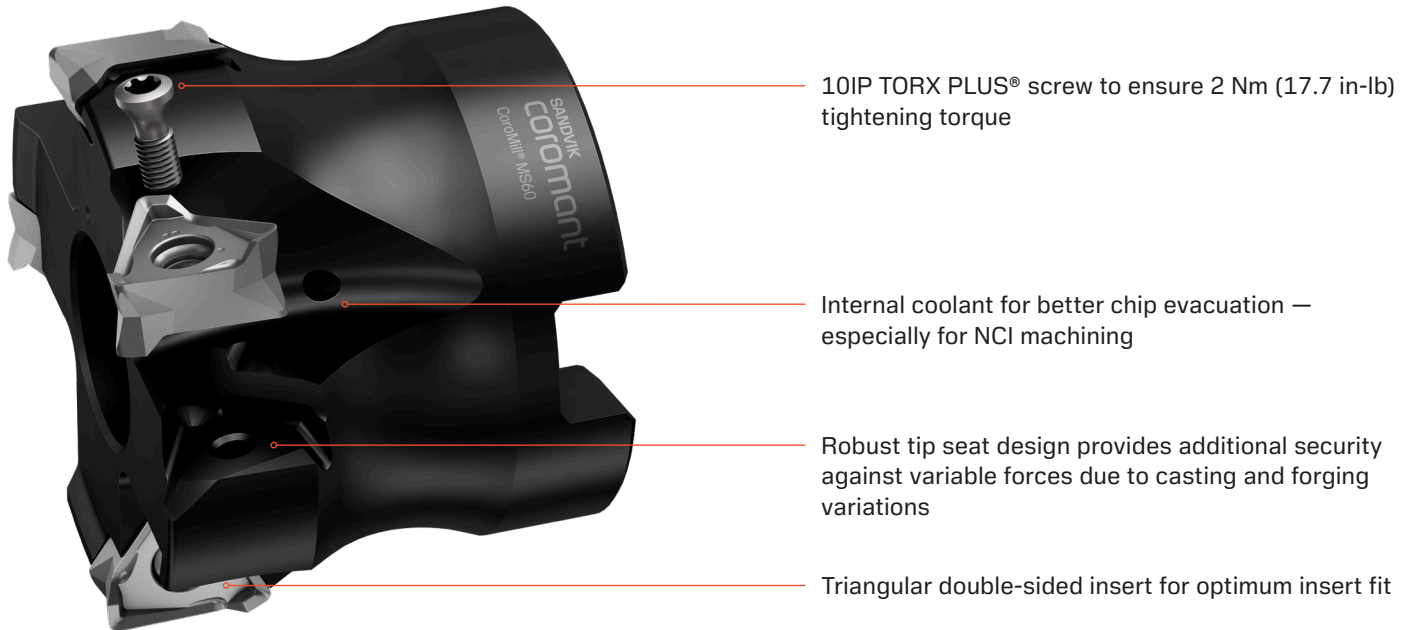
Discover the unparalleled versatility of shoulder milling solution CoroMill® MS60.

This dependable and cost-effective concept is specifically engineered for 90° shoulder milling but excels in a wide range of applications.

From face milling to ramping, pocketing, and modern dynamic milling, it's a tool that adapts to your diverse machining needs with exceptional ease.

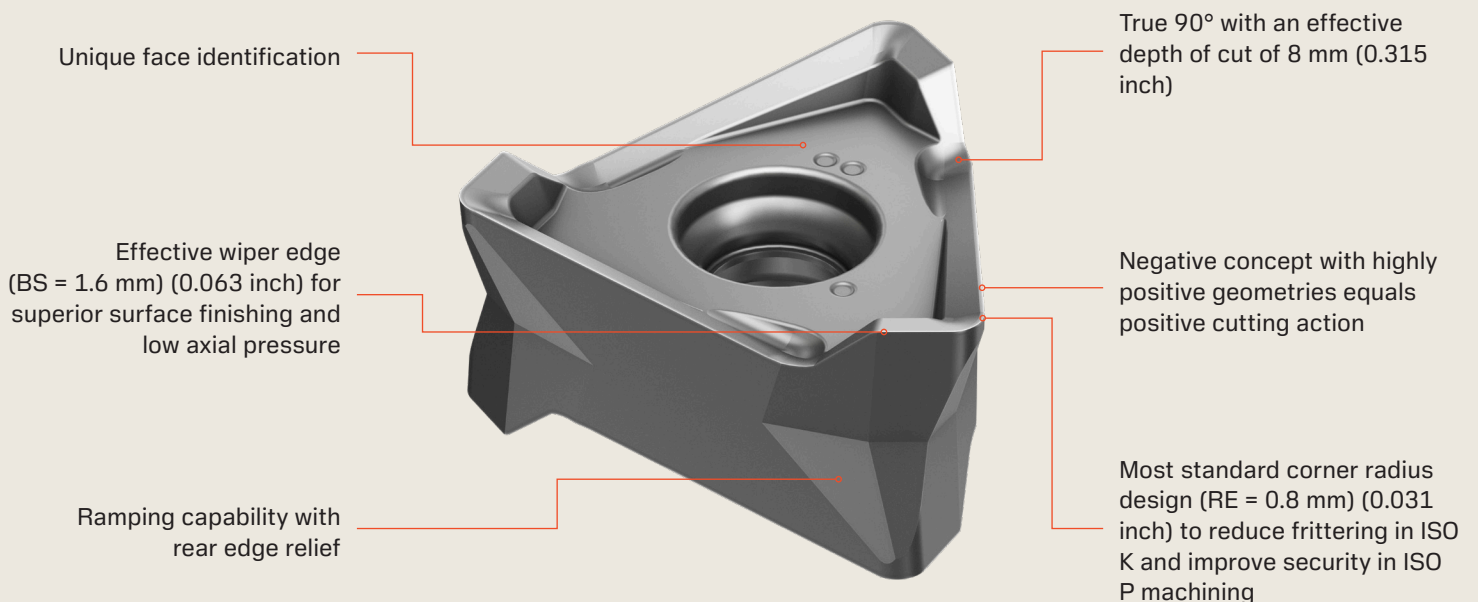
Exceptional efficiency at a low cost

Elevate your productivity and lower your cost per part with CoroMill® MS60. Featuring 6 indexing options, this tool offers a cost-effective solution, ensuring exceptional efficiency across various milling operations.



Six-edged magnificence

Thanks to its unique six-edged and direct-pressed inserts, CoroMill® MS60 can effectively handle roughing to semi-finishing operations in steel and cast iron.



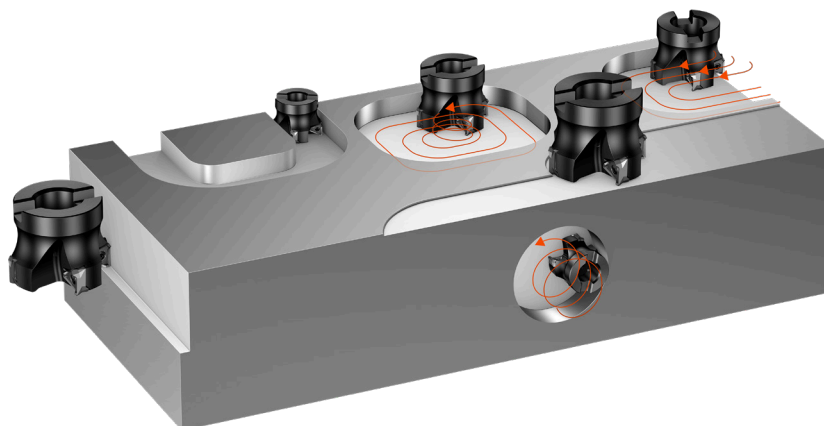
Application

Application areas:

- Roughing and semi-finishing face and shoulder milling applications where traditionally a multi-edge or tangential milling solution is used
- True 90° shoulder milling operations
- Ramping operations
- Main application areas: ISO P and ISO K
- Secondary application areas: ISO M and ISO S

For general engineering of components such as:

- Housing/casing, pump and valve parts, machine bed, machine table, head stock



Assortment

Cutter body Ø		Pitch	Coupling type	Internal coolant
Metric	50–100 mm	M - differential	Arbor	Yes
Metric	50–100 mm	H - differential	Arbor	Yes
Inch	2.00–4.00	M - differential	Arbor	Yes
Inch	2.00, 3.00, 4.00	H - differential	Arbor	Yes

Insert size	Insert geometry	Grade
16 (IC9.6)	M-L50	GC1130, GC4330, GC1020, GC3330, GC1040
16 (IC9.6)	M-M40	GC1130, GC4330, GC1020, GC3330

Learn more about CoroMill® MS60:
sandvik.coromant.com/coromillms60



Authorized distributor

